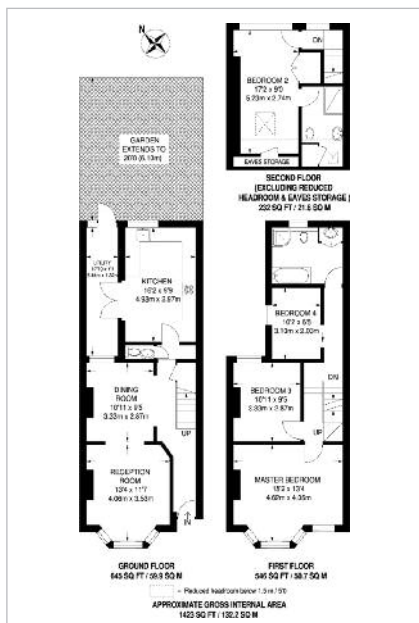


London SE10 **18 Woodland Park** **Road,** **Greenwich** **SE10 9XD**

- **A Freehold Attractive Mid Terrace House**
- Providing Four Bedroom Accommodation
- Extending to Approximately 132.2 sq m (1,423 sq ft)
- Rear Garden

Vacant Possession



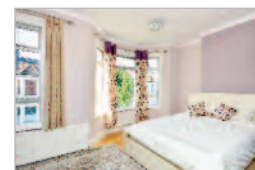
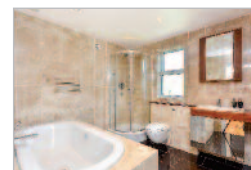
To View

The property will be open for viewing every Thursday and Saturday before the Auction between 12.45 – 1.15 p.m. These are open viewing times with no need to register. (Ref: UD).

Seller's Solicitor

Messrs Sam Hawking & Co
(Ref: Ms Sian Tuck).
Tel: 01639 884 884.

VACANT – Freehold House



Tenure

Freehold.

Location

The property is situated on the north side of Woodland Park Road, close to its junction with Tuskar Street. It is a five minute walk to Maze Hill Rail Station, which has direct links to London Bridge and London Cannon Street in less than 20 minutes. Cutty Sark DLR Station is accessible. The property is located close to the open spaces of Greenwich Park. The amenities of Greenwich are to the west and The O2 is to the north. The River Thames is to the north.

Description

The property comprises a mid terrace house arranged over ground and two upper floors beneath a pitched roof. There is a rear garden.

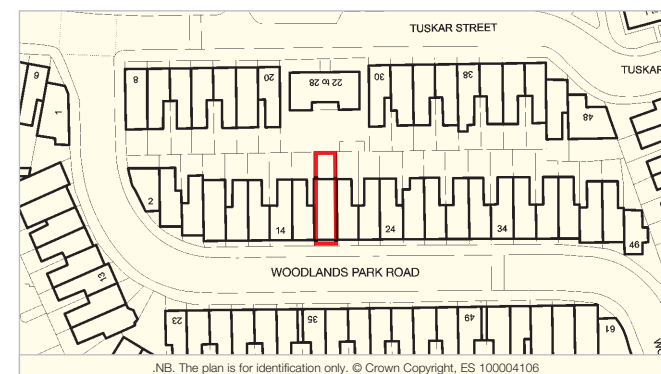
Accommodation

Ground Floor – Reception Room, Kitchen, WC, Door to Rear Patio

First Floor – Master Bedroom, Bathroom with WC,

Two Further Bedrooms

Second Floor – Bedroom with an En-Suite Shower with WC



Prospective buyers are strongly advised to read the Auctioneers' Notices Part One and Part Two and all applicable conditions of sale and addenda.

To request Legal Documents, Special Conditions of Sale and any Errata/Addenda please refer to pages 3, 8 and visit www.allsop.co.uk.

BUYER'S FEE: The successful Buyer will be required to pay to the Auctioneers a buyer's fee of £750 (including VAT) upon exchange of sale memoranda.