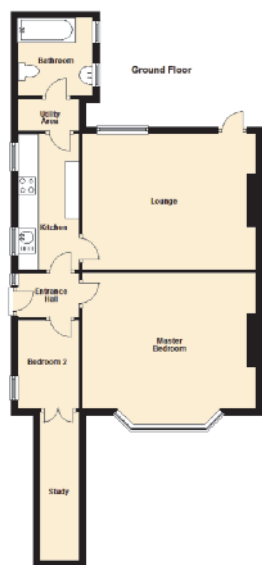


London SW16

142A Knollys Road, Streatham SW16 2JU

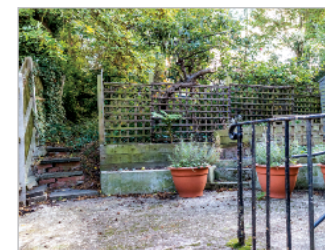
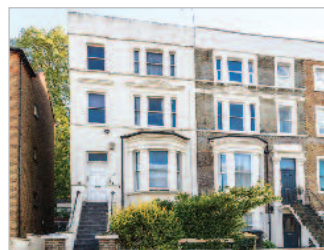
- A Long Leasehold Self-Contained Ground Floor Garden Flat
- Providing Two Bedroom Accommodation and extending (GIA) to Approximately 59 sq m (635 sq ft)
- Subject to an Assured Shorthold Tenancy
- Current Gross Rent Reserved **£16,200 per annum**



To View

Please contact Allsop by sending an email to jimmy.bruce@allsop.co.uk with the subject heading 'Viewing – Lot 51'.

INVESTMENT – Long Leasehold Flat



Tenure

Leasehold. The property is held on a lease for a term of 999 years from 25th November 2016 (thus having approximately 998 years unexpired) at a peppercorn ground rent.

Location

The property is located on the south side of Knollys Road, close to its junction with Knollys Court. Local shops and amenities are within walking distance. Tulse Hill, West Norwood and Streatham Hill Rail Stations are accessible and provide regular and direct services into Central London. The open spaces of Hillside Gardens are nearby and the South Circular Road (A205) is to the north.

Description

The property comprises a self-contained flat situated on the ground floor of an end of terrace building arranged over ground and three upper floors. The property benefits from a private garden to the rear.

Accommodation

Reception Room, Two Bedrooms, Study, Kitchen, Bathroom/WC, Utility Room

The property was not measured by Allsop. We understand the property extends (GIA) to approximately 59 sq m (635 sq ft).

Tenancy

The property is subject to an Assured Shorthold Tenancy for a term of 12 months from 25th November 2016 at a current rent of £1,350 per calendar month.

Prospective buyers are strongly advised to read the Auctioneers' Notices Part One and Part Two and all applicable conditions of sale and addenda.

To request Legal Documents, Special Conditions of Sale and any Errata/Addenda please refer to pages 3, 8 and visit www.allsop.co.uk.

BUYER'S FEE: The successful Buyer will be required to pay to the Auctioneers a buyer's fee of £1,000 (including VAT) upon exchange of sale memoranda – reduced to £200 (including VAT) for lots sold under £10,000

COSTS CHARGED BY THE SELLER: Please refer to the Special Conditions of Sale, and any subsequent revisions thereto, for details of any costs or fees to be charged by the Seller in addition to the Lot price.