

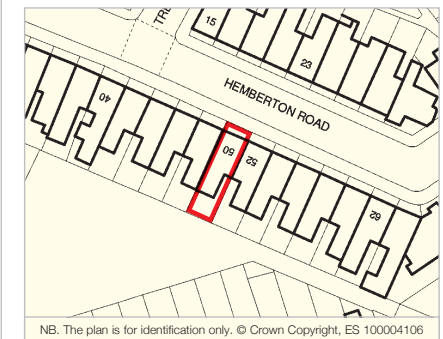
London SW9

50 Hemberton Road, Stockwell SW9 9LJ

- A Freehold Mid Terrace House
- Providing Five Bedroom Accommodation
- GIA extending to Approximately 155.89 sq m (1,678 sq ft)
- Rear Garden

Vacant Possession

BY ORDER OF THE EXECUTORS



Tenure

Freehold.

Location

The property is situated on the south side of Hemberton Road, opposite its junction with Tregothnan Road. An extensive selection of shops, bars, restaurants and entertainment venues is available along Clapham High Street to the south-west, whilst Brixton with its market and the Brixton Academy are also within reach. Both Clapham North (Northern Line) and Stockwell (Victoria Line) Underground Stations are within a 5 minute walk and both Rail and London Overground services run from Clapham High Street Station. The open spaces of Clapham Common are to the west.

Description

The property comprises a mid terrace house arranged over ground, first and second floors beneath a pitched roof. There is a rear garden and a cellar.

Accommodation

Basement – Cellar

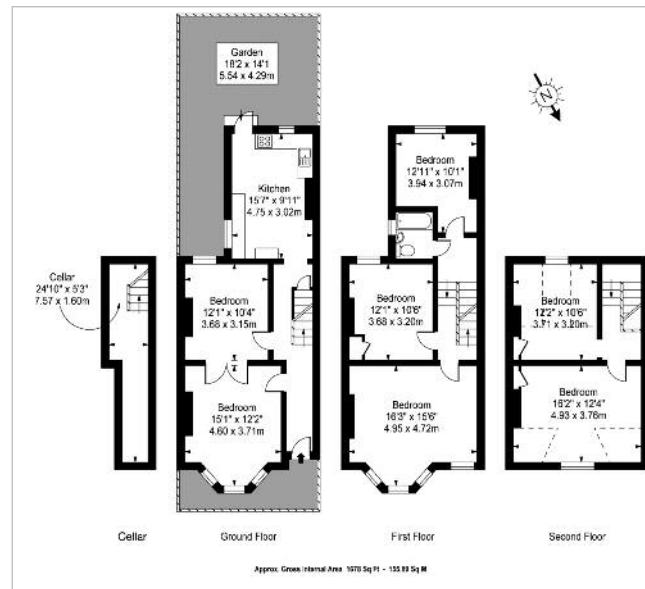
Ground Floor – Two Reception Rooms, Kitchen

First Floor – Three Bedrooms, Bathroom/WC

Second Floor – Two Bedrooms

GIA Approximately 155.89 sq m (1,678 sq ft)

NB. The measurements were provided by the Vendor.



To View

The property will be open for viewing every Monday and Saturday before the Auction between 3.30 – 4.00 p.m. These are open viewing times with no need to register. (Ref: UD).

Seller's Solicitor

Hanne & Co (Ref: Lorne West).

Tel: 0207 228 0017.

Email: lomew@hanne.co.uk

VACANT – Freehold House

Prospective buyers are strongly advised to read the Auctioneers' Notices Part One and Part Two and all applicable conditions of sale and addenda.

To request Legal Documents, Special Conditions of Sale and any Errata/Addenda please refer to pages 3, 8 and visit www.allsup.co.uk.

BUYER'S FEE: The successful Buyer will be required to pay to the Auctioneers a buyer's fee of £1,000 (including VAT) upon exchange of sale memoranda – reduced to £200 (including VAT) for lots sold under £10,000

COSTS CHARGED BY THE SELLER: Please refer to the Special Conditions of Sale, and any subsequent revisions thereto, for details of any costs or fees to be charged by the Seller in addition to the Lot price.

Lot 111 Withdrawn