

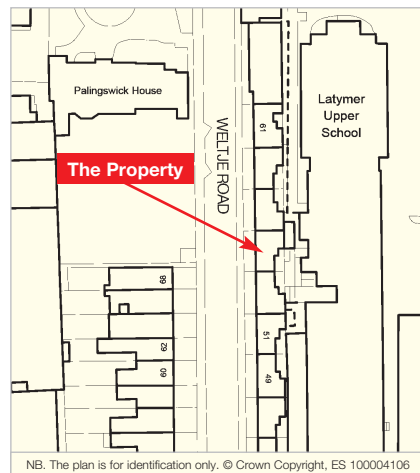
London W6

55 Weltje Road, Hammersmith W6 9LS

- A Freehold Mid Terrace Four Storey Building
- Providing Seven Letting Room Accommodation
- Possible Potential for Reconfiguration subject to obtaining all necessary consents
- Approximate GIA 197.95 sq m (2,131 sq ft)

Vacant Possession

BY ORDER OF METROPOLITAN

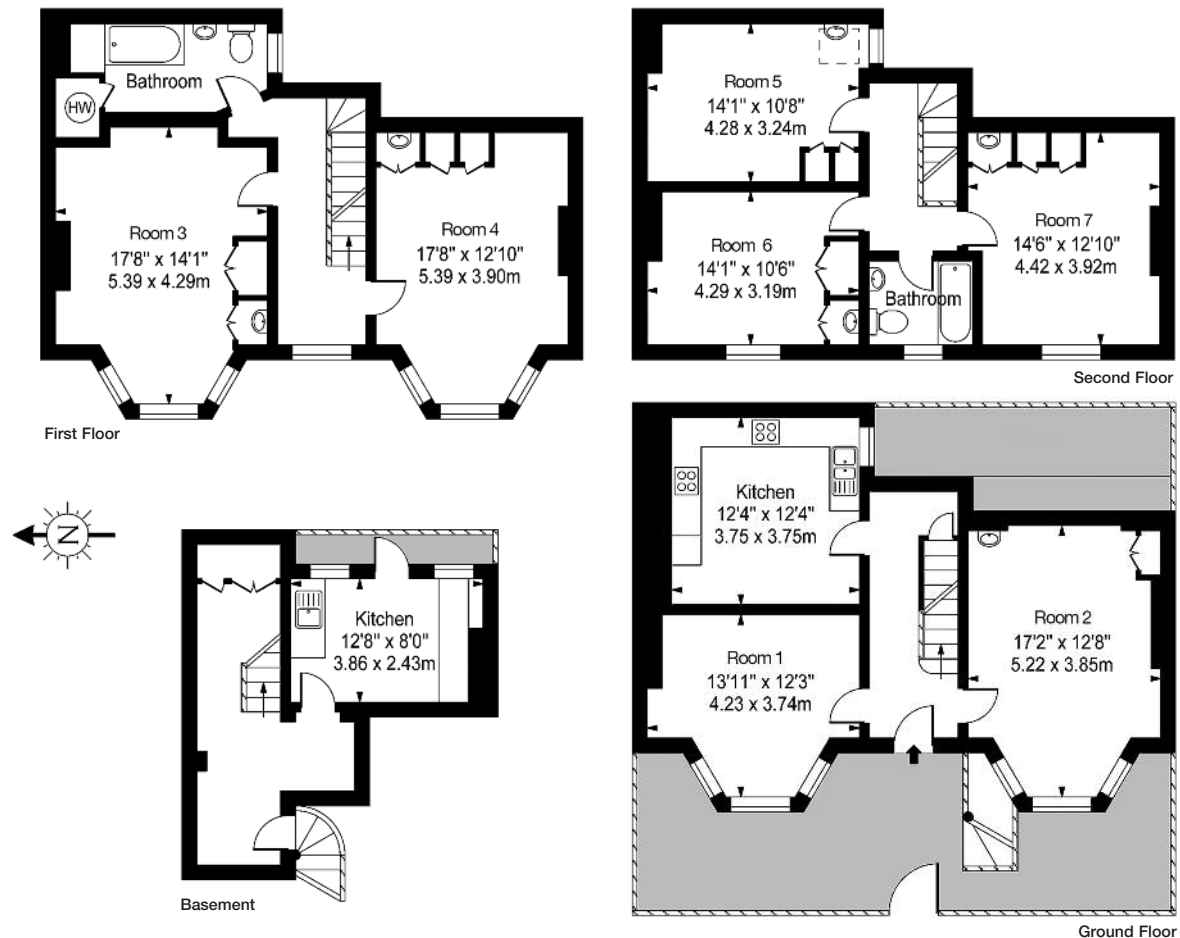


To View

The property will be open for viewing every Thursday and Saturday before the Auction between 1.00 – 1.30 p.m. These are open viewing times with no need to register. (Ref: UD).

There will be an extra viewing on Wednesday 15th July between 1.00 – 1.30 p.m.

VACANT – Freehold Building



Tenure

Freehold.

Location

The property is situated on the east side of Weltje Road between its junctions with King Street and Great West Road (A4). The local amenities of Hammersmith and Chiswick are readily accessible. The further shopping facilities of Kensington High Street are available to the east. Communications are afforded by Ravenscourt Park Underground Station (District Line), providing direct access to Central London, and the nearby A4 which provides access to the M25 (Orbital) Motorway. The River Thames is to the south and the open spaces of Ravenscourt Park are to the north.

Description

The property comprises a mid terrace building arranged over basement, ground and two upper floors. The building is internally arranged to provide seven letting room accommodation. The property may afford potential for reconfiguration, subject to all necessary consents being obtained.

Accommodation

Ground Floor – Room 1, Room 2, Kitchen

First Floor – Bathroom, Room 3, Room 4

Second Floor – Bathroom, Room 5, Room 6, Room 7

Basement – Cellar Area, Kitchen

Planning

Local Planning Authority:

The London Borough of Hammersmith & Fulham.

Tel: 0208 748 3020.

Prospective buyers are strongly advised to read the Auctioneers' Notices Part One and Part Two and all applicable conditions of sale and addenda.

To request Legal Documents, Special Conditions of Sale and any Errata/Addenda please refer to pages 3, 8 and visit www.allisop.co.uk.

BUYER'S FEE: The successful Buyer will be required to pay to the Auctioneers a buyer's fee of £750 (including VAT) upon exchange of sale memoranda.

